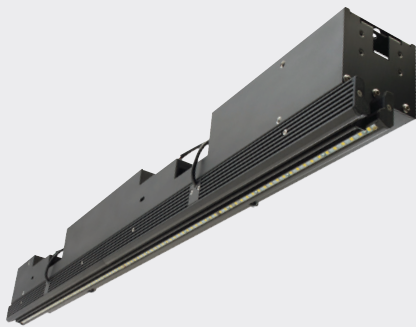


AxCIS COLOR

Contact Image Sensor



KEY FEATURES

- High speed 60 kHz x3, and high resolution 28 µm or 900 dpi
- No missing or interpolated pixels
- Exposure control
- RGB colors
- Precalibrated pixel size for metrology applications
- Camera Link HS fibre interface

PROGRAMMABILITY

- Automatic image alignment with a seamless image output
- Subpixel spatial correction
- 8 or 12 bit output
- Flat field correction
- Programmable coefficient sets

TYPICAL APPLICATIONS

- Print inspection
- Printed circuit boards
- Web inspection
- General purpose machine vision

High Performance Contact Image Sensor

Based on Teledyne DALSA's industry leading CMOS line scan sensors, the new AxCIS product offers highly integrated vision solutions at lower system costs for many demanding applications in machine vision. It combines sensors, lenses, and light sources in a compact design with ease of use and maintenance. AxCIS comes with CLHS fibre interface, delivering high data throughput, high reliability, and long cable distance over fibre optic cables.

SPECIFICATIONS

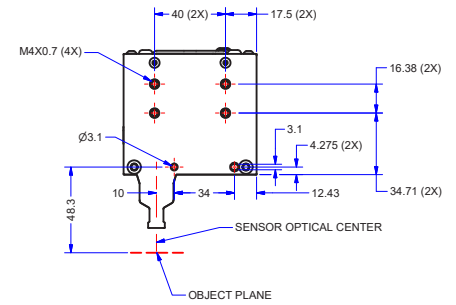
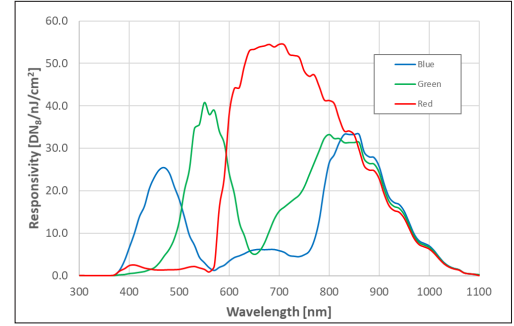
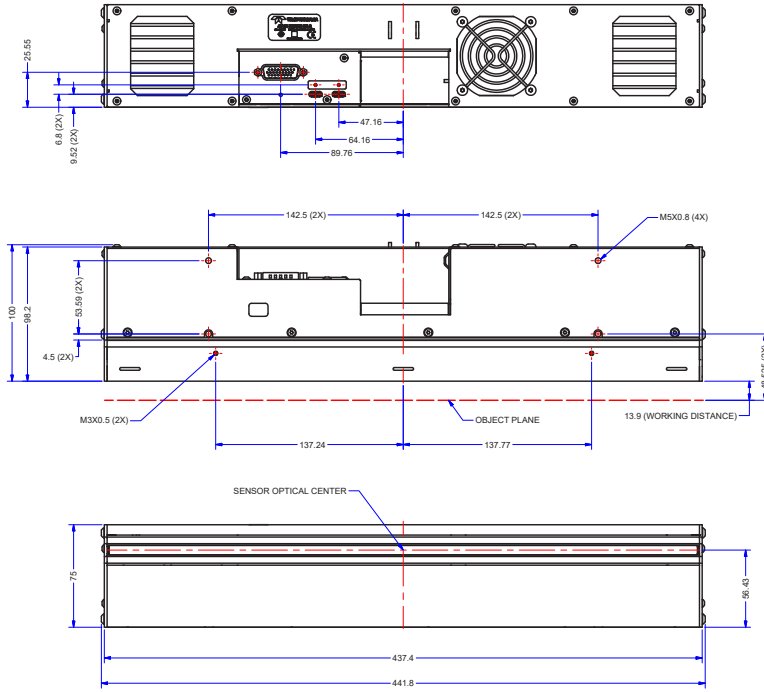
| | |
|-------------------------|---|
| Field of View | 400/600/800 mm |
| Depth of Field | ±0.6 mm |
| Working Distance | 13.9 mm |
| Resolution | 28/42/56/84 µm (900/600/450/300 dpi) selectable |
| Max Line Rate | 50/60 kHz x 3 |
| Output | RGB |
| Bit Depth | 8 or 12 bit selectable |
| Responsivity | See graph |
| Light Source | White LED (optional) |
| Dynamic Range | >76 dB |
| Nominal Gain Range | 1x to 10x |
| Size | 441.8 (L) x 75 (W) x 100 (H) mm (400 mm) 641 (L) x 75 (W) x 100 (H) (600 mm) 841.8 (L) x 75 (W) x 100 (H) mm (800 mm) |
| Dust Ingress Protection | IP60 (optical path) |
| Operating Temp | 0 to +65 °C (case) |
| Power Supply | +24 VDC |
| Power Dissipation | 65W (400 mm) 86W (600 mm) 100W (800 mm) |
| Data & Control | Camera Link HS SFP+ |
| GPIO | RS422 |
| Regulatory Compliance | CE, FCC, and RoHS |

AxCIS COLOR MODEL

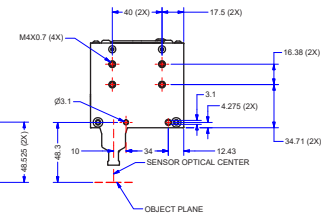
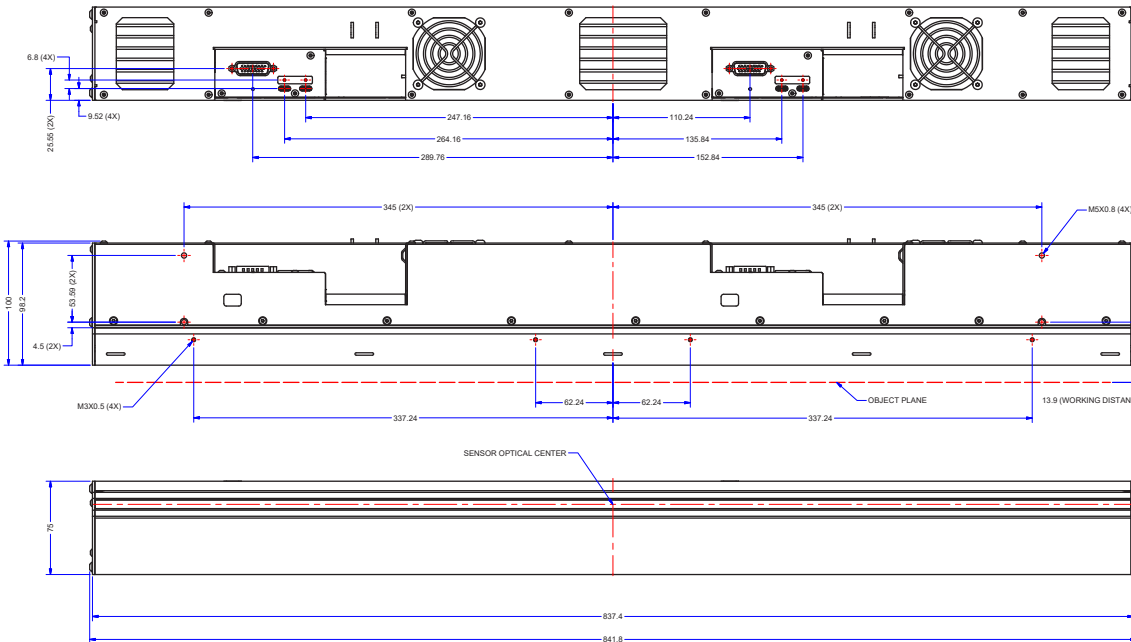
| Part Number | FOV | Max. Line Rate | Pixel Size/dpi | Output |
|-----------------|--------|----------------|---|--------|
| AX-FC-04B06T-00 | 400 mm | 50/60 kHz x 3 | 28/42/56/84 µm (900/600/450/300 dpi) selectable | RGB |
| AX-FC-08B06T-00 | 800 mm | 50/60 kHz x 3 | 28/42/56/84 µm (900/600/450/300 dpi) selectable | RGB |
| AX-FC-06B06T-00 | 600 mm | 50/60 kHz x 3 | 28/42/56/84 µm (900/600/450/300 dpi) selectable | RGB |

SPECIFICATIONS

400 mm



800 mm



FOR MORE INFORMATION CONTACT:

AMERICAS Boston, USA | +1 978-670-2000 | TDI_sales.americas@teledyne.com
 EUROPE Munich, Germany | +49 89-89-54-57-3-80 | TDI_sales.europe@teledyne.com
 ASIA PACIFIC Tokyo, Japan | +81 3-5960-6353 | TDI_sales.asia@teledynedalsa.com
 Shanghai, China | +86-21-60131571 ex. 801 | saleschina@teledyne.com

This document does not contain information whose export/transfer/disclosure is restricted by the Canadian Export Control regulation. Teledyne DALSA has its corporate offices in Waterloo, Canada. Teledyne DALSA reserves the right to make changes at any time without notice. © Teledyne DALSA.

Revision Number: 03-070-20172
 Revision Date: 2026 03 06