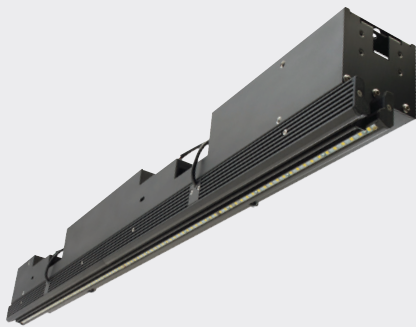


AxCIS MONO

Contact Image Sensor



KEY FEATURES

- High speed 120 kHz, high resolution 28 µm or 900 dpi
- No missing or interpolated pixels
- Exposure control
- HDR mode using dual exposure
- Precalibrated pixel size for metrology applications
- Camera Link HS fibre interface

PROGRAMMABILITY

- Automatic image alignment with a seamless image output
- Subpixel spatial correction
- 8 or 12 bit output
- Flat field correction
- Programmable coefficient sets

TYPICAL APPLICATIONS

- Battery inspection
- Print inspection
- Printed circuit boards
- Web inspection
- General purpose machine vision

High Performance Contact Image Sensor

Based on Teledyne DALSA's industry leading CMOS linescan sensors, the new AxCIS modules offers highly integrated vision solutions at lower system costs for many demanding applications in machine vision. It combines sensors, lenses, and light sources in a compact design with ease of use. AxCIS comes with CLHS Fiberoptic interface, delivering high data throughput, high reliability, and long cable distance over standard fibre optic cables.

SPECIFICATIONS

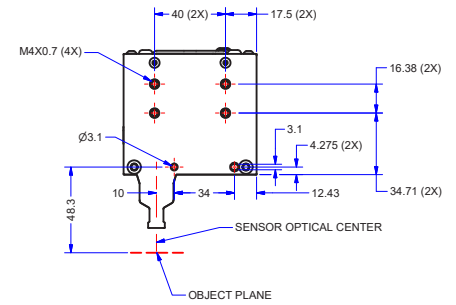
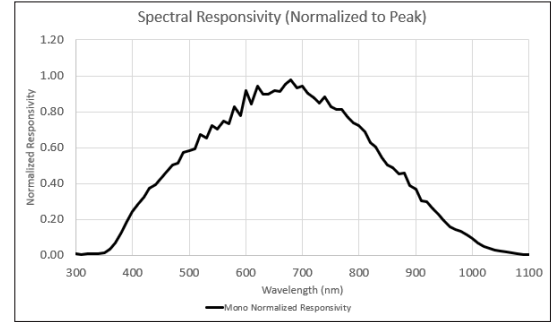
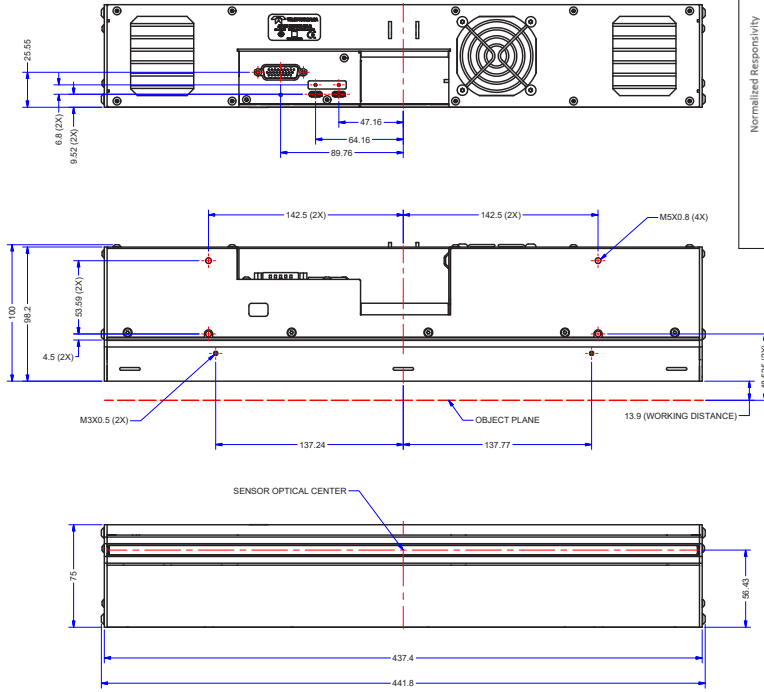
Field of View	400/700/800/1500
Depth of Field	± 0.6 mm
Working Distance	13.9 mm
Resolution	28/42/56/84 µm (900/600/450/300 dpi) selectable
Max Line Rate	120/60 x 2 kHz (mono/HDR)
Output	Mono/HDR
Bit Depth	8 or 12 bit selectable
Responsivity	See graph
Light Source	White LED (optional)
Dynamic Range	>76 dB
Nominal Gain Range	1x to 10x
Size	441.8 (L) x 75 (W) x 100 (H) mm (400 mm) 741.8 (L) x 75 (W) x 100 (H) mm (700 mm) 841.8 (L) x 75 (W) x 100 (H) mm (800 mm) 1541.8 (L) x 75 (W) x 100 (H) mm (1500 mm)
Dust Ingress Protection	IP60 (optical path)
Operating Temp	0 to +65 °C (case)
Power Supply	+24 VDC
Power Dissipation	65W (400 mm) 96W (700 mm) 100W (800 mm) 240W (1500 mm)
Data & Control	Camera Link HS SFP+
GPIO	RS422
Regulatory Compliance	CE, FCC, and RoHS

AxCIS MONO MODEL

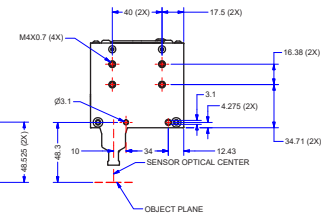
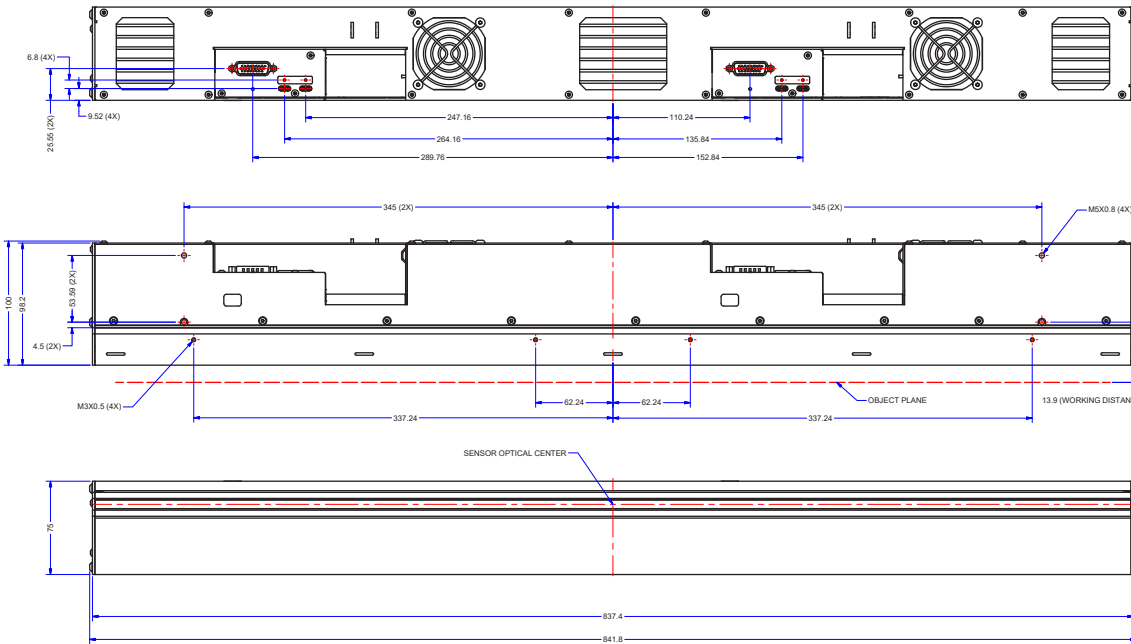
Part Number	FOV	Max. Line Rate	Pixel Size/dpi	Output
AX-FM-04B12H-00	400 mm	120/60 x 2 kHz	28/42/56/84 µm (900/600/450/300 dpi)	Mono/HDR
AX-FM-07B12H-00	700 mm	120/60 x 2 kHz	28/42/56/84 µm (900/600/450/300 dpi)	Mono/HDR
AX-FM-08B12H-00	800 mm	120/60 x 2 kHz	28/42/56/84 µm (900/600/450/300 dpi)	Mono/HDR
AX-FM-15B12H-00	1500 mm	120/60 x 2 kHz	28/42/56/84 µm (900/600/450/300 dpi)	Mono/HDR

SPECIFICATIONS

400 mm



800 mm



FOR MORE INFORMATION CONTACT:

THE AMERICAS Boston, USA | +1-978-670-2000 | TDI_sales.americas@teledyne.com
 EUROPE Munich, Germany | +49-89-89-54-57-3-80 | TDI_sales.europe@teledyne.com
 JAPAN & ASIA PACIFIC Tokyo, Japan | +81-3-5960-6353 | TDI_sales.asia@teledyne.com
 SHANGHAI OFFICE Shanghai, China | +86-21-60131571 ext. 801 | saleschina@teledyne.com

This document does not contain information whose export/transfer/disclosure is restricted by the Canadian Export Control regulation. Teledyne DALSA has its corporate offices in Waterloo, Canada. Teledyne DALSA reserves the right to make changes at any time without notice. © Teledyne DALSA.

Revision Number: 03-070-20171
 Revision Date: 2026 03 06