

Cascade SUMMIT200

200 mm Fully-automated Probe System

eVue™ IV Digital Imaging System

- Fast probe set-up with wide field-of-view and single objective in MicroChamber
- Easy navigation with multiple live video views of probes and wafer
- New high-speed focus system for faster and accurate die stepping
- New safety features for probes and usability

Versatile microscope mount

- High stability on large area
- Boom stand for low power optics
- Gross Z-lift with repeatable focus for easy access to probes
- Manual or programmable
- Field-upgradable

Connection panels

- Coaxial, triaxial, and pin jack feed-throughs available
- Limit cable strain and motion for measurement stability
- Instrument stays connected to back of panel
- Probe connection made at front of panel
- Simple to re-arrange cabling when needed

Platen lift

- Easy and safe contact and separate function for probe cards and positioners
- Available micrometer adjustment to set probe card contact

TopHat™

- New TopHat covers for easier and higher-accuracy probe setup
- Allows full access to positioners and microscope at any temperature
- Allows probe adjustments without exposing wafer and chamber to external environment

PureLine™ technology

- Enhanced EMI-shielding
- Lowest spectral noise floor and system AC noise
- Ideal for low-level and If measurements

AttoGuard®

- Extends instrument guard to completely surround wafer
- Makes the station invisible to the instrument
- Extremely low capacitance and leakage characteristics
- Fast settling times

MicroChamber®

- EMI-shielding for low-noise measurements
- Environmentally sealed for moisture-free, low-temperature measurements
- Low volume for the fastest purge
- Light-tight to eliminate the need for a dark box

MicroChamber access door

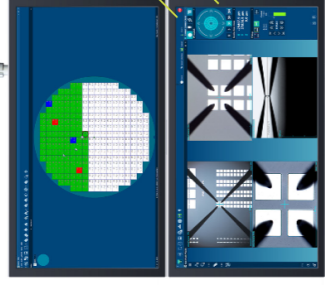
- Auto-locking door to protect wafers at cold temperatures
- Full width for easy access to wafers and cal substrates
- Hardware interlock to protect user from hazardous chuck bias voltage

Rollout stage

- Full wafer access for safe and easy loading
- Maintains chuck integrity without contaminating layers
- Easy access to calibration substrates on auxiliary chucks
- New Lift pin technology for fast manual load/unload of hot wafers



VIDEO



“The new SUMMIT200 advanced probing system enables up to 5X faster time to accurate data.”

Velox™ probe station control software

- Innovative operating software for advanced probe operation; temperature control, z-profiling and stepping
- Wafer mapping, automated wafer alignment, and auto XYZ and theta correction for sub-micron stepping

VeloxPro package (optional)

- SEMI E95-compliant probe station control software with condensed graphical user interface for simplified operation
- Test executive software enabling control of third-party measurement equipment via the probe station

Automated wafer handling

- Up to 50 wafers with optional 2nd cassette
- Quick access port for maximum throughput
- Save time with parallel ID reading and pipelining
- Fast load/unload wafer to hot/cold chuck (-60° C to +300° C)

Thin wafer testing

- Safe robot handling for thin/warped wafers down to 50 µm
- Advanced wafer handling for high-performance non-lift/pins MicroVac chucks

Auxiliary chucks

- Up to 3 integrated multi-purpose mounts (calibration, cleaning, contact)
- New microwave absorber and material options (ceramic, steel)
- Thermally isolated to prevent load drift over temperature
- Automated probe cleaning capabilities

Chuck vacuum control

- Independent zones for various wafer sizes, dies and shields
- Easy access controls for auxiliary chucks

Modular chucks

- FerroGuard® triaxial and coax versions available
- MicroVac™ option for thin wafer support and best thermal conductivity
- High-performance thermal and economical non-thermal options
- Wide range of temperature options from -60 °C to 300 °C and higher

Manual mode stage control

- Intuitive manual chuck XY stage controls in semi-automatic engineering mode

Precision 200 mm wafer stage

- New user-selectable performance modes for standard, fast and high accuracy
- Increased test throughput with up to 100 mm/sec. speed
- High reliability 24/7 operation

Contact Intelligence™ Technology

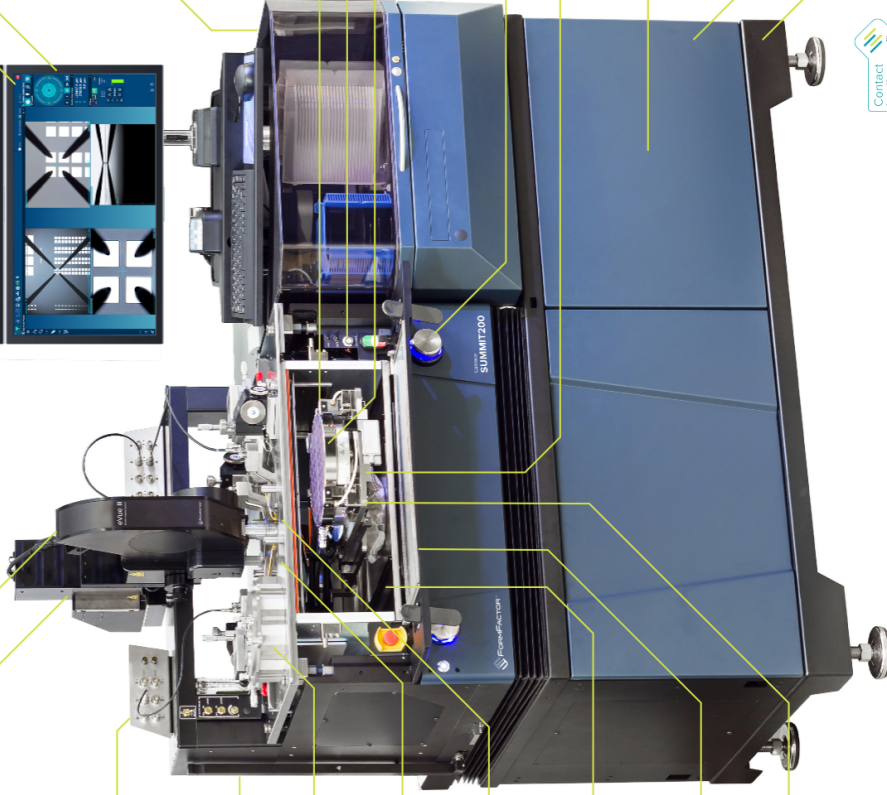
- Integrated HTS (High Thermal Stability) reduces probe drift and thermal soak time
- Optional Realign for SUMMIT200 with Near-On-Axis PTPA technology, enabling vertical probe cards on smallest footprint with highest thermal stability
- Optional VueTrack™ enables fast time to data even when measuring over a large thermal range
- Enables unattended test over multiple temperatures

Scalable system

- In-field upgradable wafer loading and automation
- Add test accuracy improvements for increased test performance

Compact small footprint

- Integrated vibration isolation for reliable small pad probing
- Integrated system electronics with power loss wafer safety protection



©Copyright 2018, FormFactor, Inc. All rights reserved. FormFactor and the FormFactor logo are trademarks of FormFactor, Inc. All other trademarks are the property of their respective owners. All information is subject to change without notice.