

eProbes Customs New Product Order Form (NPOF)



for DCQ, ACP, WPH Probes

Please fill out the form below and return it to FormFactor or your local representative.

Date		PO#	
Company		Requisitioner	
Buyer		Technical contact	
Shipping address			
City/State		Phone	
Country		FAX	
Postal code		Email	

For exact re-order, specify serial or PCN #

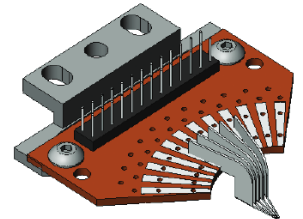
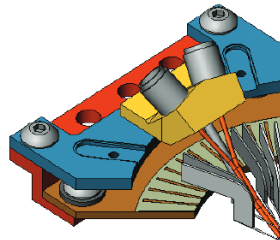
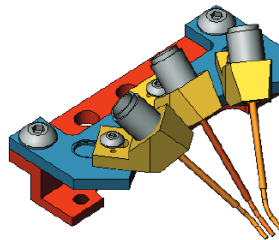
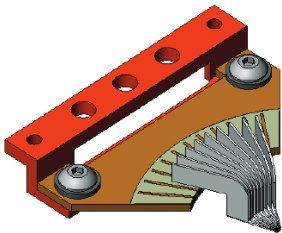
For new orders, please fill out information below.

Probe Type (mark one):

DC only (DCQ)

RF or mixed DC/RF (ACP-Q)

WPH-900*



*BeCu tips unavailable

Pad Material

- Gold
- Aluminum
- Other

Probe Tip Material

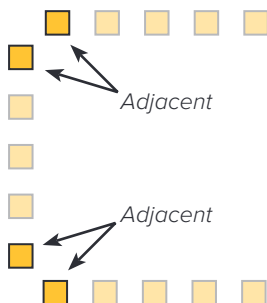
- BeCu (Unavailable for WPH-900)
- Tungsten

Pad Size (contact area)

Specify minimum pad size

Adjacent Quadrants

- No
- Yes (Attach DUT layout or probe contact coordinates)



Cable and Connector (Not provided on WPH-900)

- 28 AWG Teflon wire (21 inch long) and 2 x 13 square pin
Or specify length:

- RG-178 coax and BNC*
Specify length (maximum 5 feet):

- Other: (mark connector type below)

- Banana plug
- D-Sub*
- SMA*
- Triax*
- Un-terminated
- Combination of several types

*Additional charges may apply. Specify length:

eProbes Customs New Product Order Form (NPOF) for DCQ, ACP, WPH Probes



DCQ (maximum 16 DC needles)

Probe Pitch

- Uniform: (μm) pitch
- Variable: (indicate pitches in the diagram below)

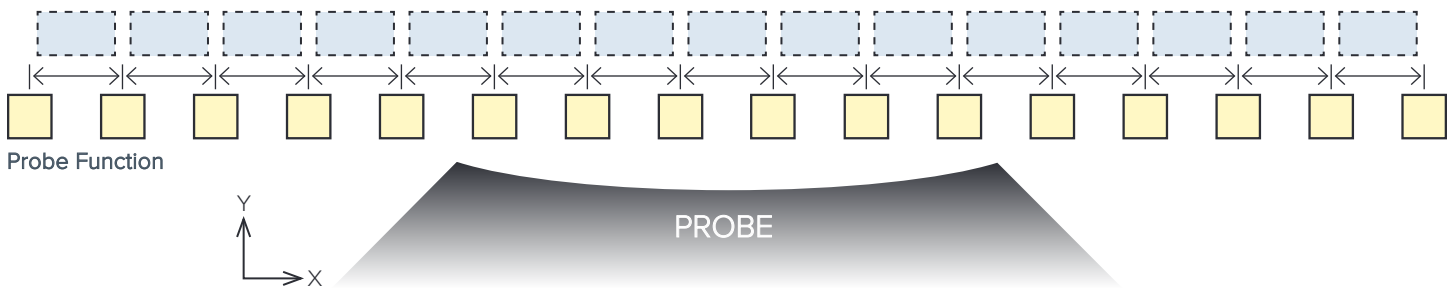
Probe Alignment

- Linear
- Non-linear (attach DUT layout or contact coordinates)

Indicate Probe Function in yellow boxes in the diagram below:

- P** = Power (100 pF gap capacitor)
- G** = Ground (0 Ω resistor)
- S** = Signal or Logic (no components)
- O** = Other: Provide component information

Pitches (if variable)



ACP-Q

Dual signals: Limit one per ACP-Q (placed at center RF position)
Single signals: Allow at least 1200 μm between individual RF signals. Maximum three signals.

RF Frequency

- 40 GHz
- 65 GHz
- 50 GHz
- 110 GHz

RF Pitch

- Specify pitch between 100 and 1250 μm
- (μm) pitch
- Per attached DUT layout

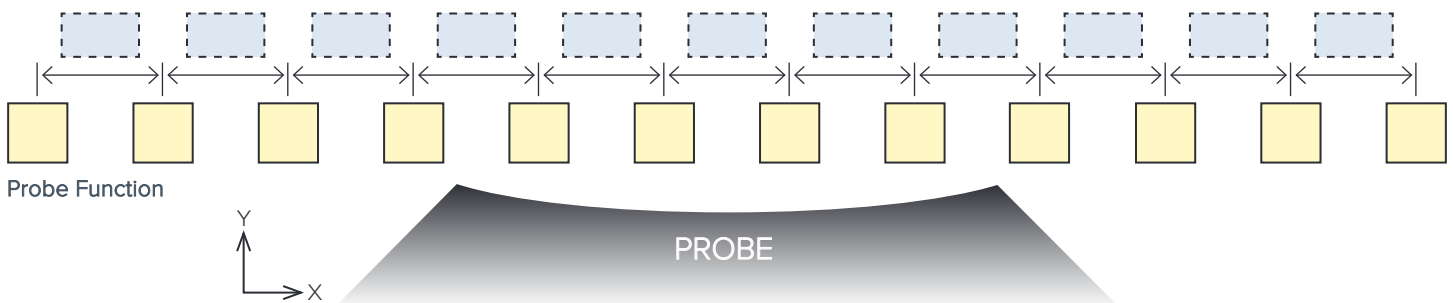
Probe Alignment

- Linear
- Non-linear (attach DUT layout or contact coordinates)

Indicate Probe Function in yellow boxes in the diagram below:

- P** = Power (100 pF gap capacitor)
- G** = Ground (0 Ω resistor)
- S** = Signal or Logic (no components)
- RFG** = RF Ground
- RFS** = RF Signal
- O** = Other: Provide component information

Pitches (if variable)



eProbes Customs New Product Order Form (NPOF) for DCQ, ACP, WPH Probes

WPH-900 (maximum 12 DC needles)

Probe Pitch

- Uniform (specify pitch)
 (μm) pitch
- Per attached DUT layout

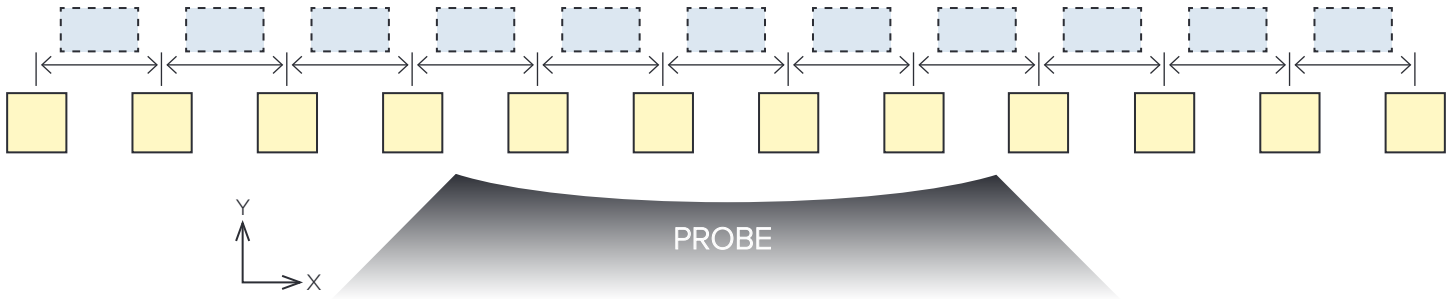
Probe Alignment

- Linear
- Non-linear (attach DUT layout or contact coordinates)

Mounted Components on PCB

- No
- Yes (provide schematic and component information)

Pitches (if variable)



Additional Instructions:

© Copyright 2022 FormFactor, Inc. All rights reserved. FormFactor and the FormFactor logo are trademarks of FormFactor, Inc. All other trademarks are the property of their respective owners.

All information is subject to change without notice.

Corporate Headquarters

7005 Southfront Road
Livermore, CA 94551
Phone: 925-290-4000
www.formfactor.com

