

VANTAGE

Probably the world's best Ethernet production line tester

OVERVIEW

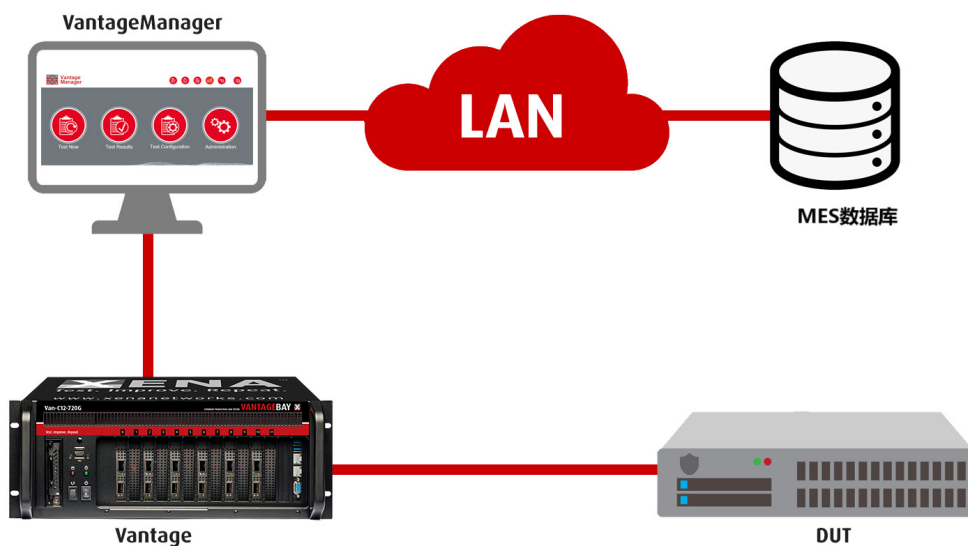
Vantage is a production line test solution for networking devices that use Ethernet traffic, such as switches, NICs, routers, GPON devices, cable modems, EOC, power modems and so on.

The solution consists of dedicated hardware and software from an experienced test & measurement expert, and is designed to be flexible, scalable and very easy to use.

Vantage makes it easy for NEMs to quickly detect performance issues and verify new features before DUTs leave the factory.

This small investment in pre-production testing and quality assurance improves customer satisfaction and productivity.

Vantage is all about ease-of-use. User-friendly software gives quick access to powerful automation features that make it simple for production-line staff to conduct comprehensive testing with just a few minutes instruction – one click of a button is enough to execute complex sequences of testing and report generation.



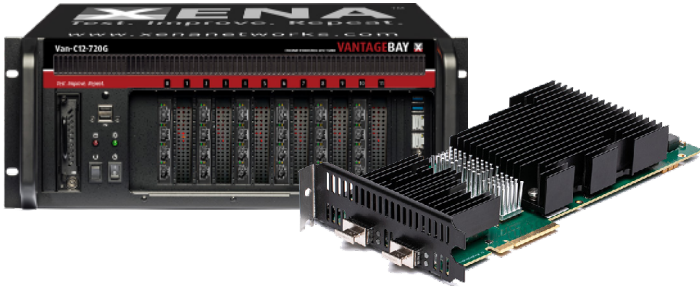
KEY FEATURES

- World's fastest production line tester
- Ultra-simple web-browser UI - 3 clicks to complete test cycle
- Seamless parallel test case execution
- Displays test status, progress, and real time logs
- Easy to script using CLI and RESTapi from any software environment, for rapid integration with customers own UI applications
- Telnet feature makes it easy to remotely check DUT status (e.g. LED, USB and REGEDIT), and modify DUT configuration
- Interface with customer Manufacturing Execution System (MES) system via DLL/SQL/HTTP, to store test results into its database
- Vantage can test all Ethernet speeds from 100M up to 400G speeds (including both NRZ & PAM4)
- It is based on Xena's Valkyrie platform making it the industry's most stable and accurate Ethernet production test solution
- Free software & free tech support product lifetime

VANTAGE

Probably the world's best Ethernet production line tester

HARDWARE



The modular, high-port density 4U VantageBay chassis has 12 slots for test modules supporting speeds from 1GE up to 400GE via a variety of interfaces: SFP, SFP+, QSFP, QSFP28, QSFP56 & RJ45.



There are 4 versions of the fixed 1U VantageCompact chassis which support testing from 1GE to 100GE. A robust travel case is also available to protect the tester under transport.

SOFTWARE

Vantage is operated via an easy-to-use web-interface called VantageManager, which works with any web browser and requires no understanding of network or testing to operate.

Pre-defined testcases are available and new testcases can easily be developed to meet individual needs.

VantageManager automatically generates reports of all tests. These are easy to understand, with the front page summarizing pass/fail of the DUT ports, plus a list of possible causes for failed ports. Full details are also available later in the report if needed.

Testing with VantageManager, requires only 3 clicks:

- 1: Select the test configuration
- 2: Select the port
- 3: Click 'Start'

