



VANTAGE

Ethernet production line testing

VANTAGE Overview

Vantage is a production line test solution for networking devices that use Ethernet traffic, such as switches, NICs, routers, GPON devices, cable modems, EOC, power modems and so on.

The solution consists of dedicated hardware and software that is flexible, scalable and very easy to use.

Vantage helps Networking Equipment Manufacturers (NEMs) quickly detect performance issues and verify new features before the Devices Under Test (DUTs) leave the factory.

Vantage is all about ease-of-use. The intuitive GUI gives quick access to powerful automation features that make it simple for production-line staff to conduct comprehensive testing with just a few minutes instruction – one click of a button is enough to execute complex sequences of testing and report generation.

- Pre-defined production test cases
- Easy to develop new test cases
- Sequential and batch test modes, without manual intervention
- Pass/Failure threshold pre-configuration



Vantage Hardware: Rack-mountable and Portable Chassis

ROBUST, HIGH-DENSITY TEST CHASSIS:

The modular, high-port density 4U VantageBay chassis has 12 slots for test modules supporting speeds from 1GE up to 400GE via a variety of interfaces: SFP, SFP+, QSFP, QSFP28, QSFP56 & RJ45.

EASY-TO-TRANSPORT VANTAGECOMPACT:

There are 4 versions the fixed 1U VantageCompact chassis which support testing from 1GE to 100GE. You can also buy a convenient travel case that protects the tester while it is being transported.



VantageBay

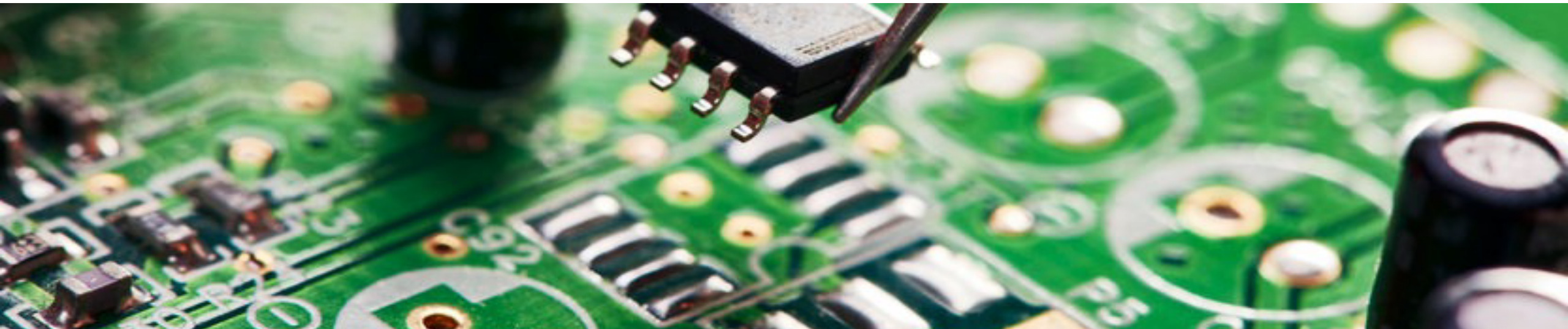


VantageCompact

Vantage Hardware: Test Modules with most Ethernet Speeds Coverage

Vantage has 5 dedicated production-only test modules that can be installed in many combinations. The robust chassis features a very strong mounting mechanism for the test modules. This ensures high levels of reliability in demanding production environments and during transportation.

- Van-400G-7S-1P supports testing at 400G, 200G, 100G, 50G, 40G, 25G and 10G.
- Van-100G-5S-2P supports testing at 100G, 50G, 40G, 25G and 10G
- Van-10G-5S-6P-CU supports testing 10G, 5G, 2.5G, 1G and 100M.
- Van-10G-1S-6P: 6 SFP+ ports for testing at 10GBASE-SR/LR/DAC
- Van-1G-3S-6P : 6 RJ45/SFP ports for testing 1GBase-T copper at 10M, 100M and 1G/100M fiber.



Software – Easy to Use Web UI



Vantage is controlled via an easy-to-use web-interface called VantageManager. VantageManager works with any web browser and requires no understanding of network or testing to operate.

Pre-defined testcases are available and new testcases can be developed by Xena's engineers or customers to meet individual needs.

VantageManager automatically generates reports of all tests. These are easy to understand, with the front page summarizing pass/fail of the DUT ports, plus a list of possible causes for failed ports. Full details are also available later in the report if needed.

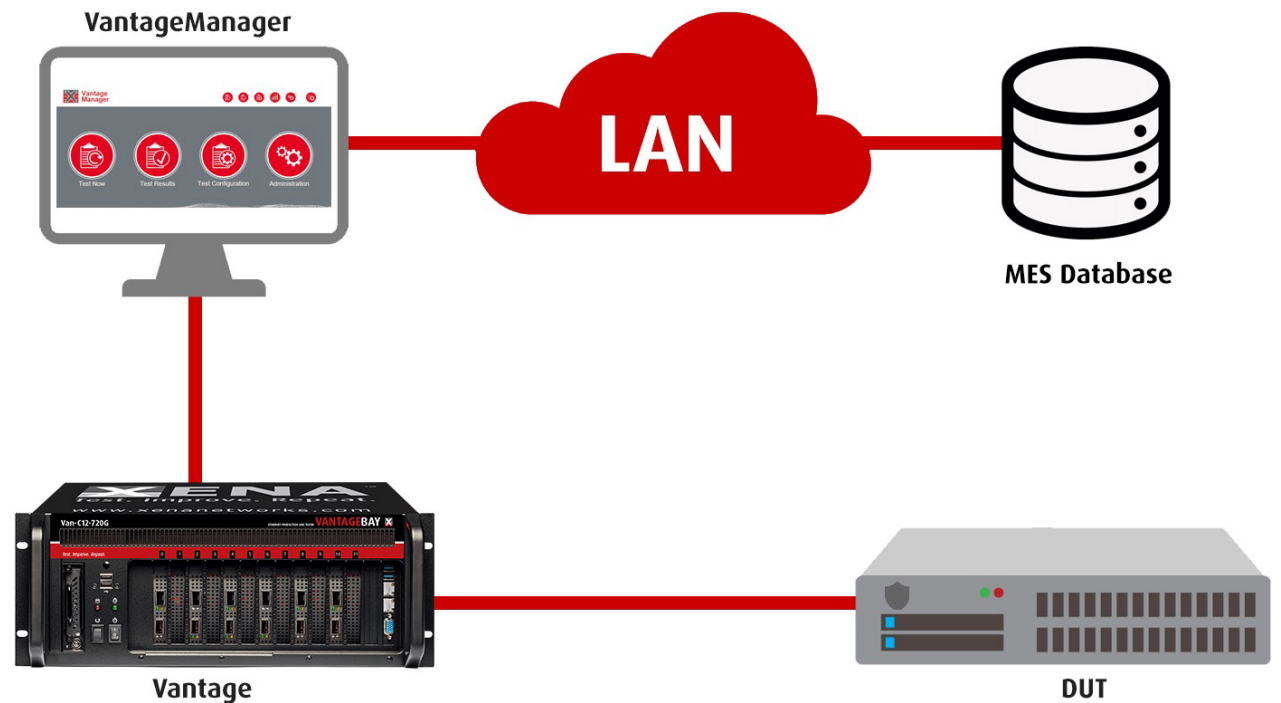


Flexible MES System Accessing Methods

Most of EMS/OEM factories have their own MES (Manufacturing Execution System) system, which will require the tester to upload the test data automatically.

Vantage supports different methods of database interfaces:

- Upload data through DLL library
- Upload data through SQL interface
- Upload data through http interface
- Defining own database Accessing interfaces through Vantage API
- And more



Powerful Automation

Vantage provides an API interface, which allows the end user to configure and control Vantage through its own platform.

Vantage provides many existing scripts, making it easier to develop a tailored system easily and quickly

Supported API interfaces include:

- Python
- TCL
- Java
- REST API
- C#
- Ruby
- Bash
- Etc.

**VANTAGE
REST API**



TCL



JAVA



RUBY

Ready to Use Test Cases

ROUTER TEST

Bi-directional traffic generation between WAN and LAN ports, could be multiple LAN ports to single WAN port, or one WAN port to multiple LAN ports. Test of throughput and failures. The test may be configured with values for packet size, bandwidth, packet loss and other stream parameters. The result of the test is a pass/fail message and in the case of fail details about the failure for later analysis.

LOOPBACK TEST

Loopback test one a configurable number of ports on e.g. a DUT such as a switch or a router. The test may be configured with values for packet size, bandwidth, packet loss and other stream parameters. The result of the test is a pass/fail message and in the case of fail details about the failure for later analysis.

PON AGGREGATION TEST

Traffic is transmitted one-to-many and packets are sent both up and down-link. The test may be configured with values for packet size, bandwidth, packet loss and other stream parameters. The result of the test is a pass/fail message and in the case of fail details about the failure for later analysis.

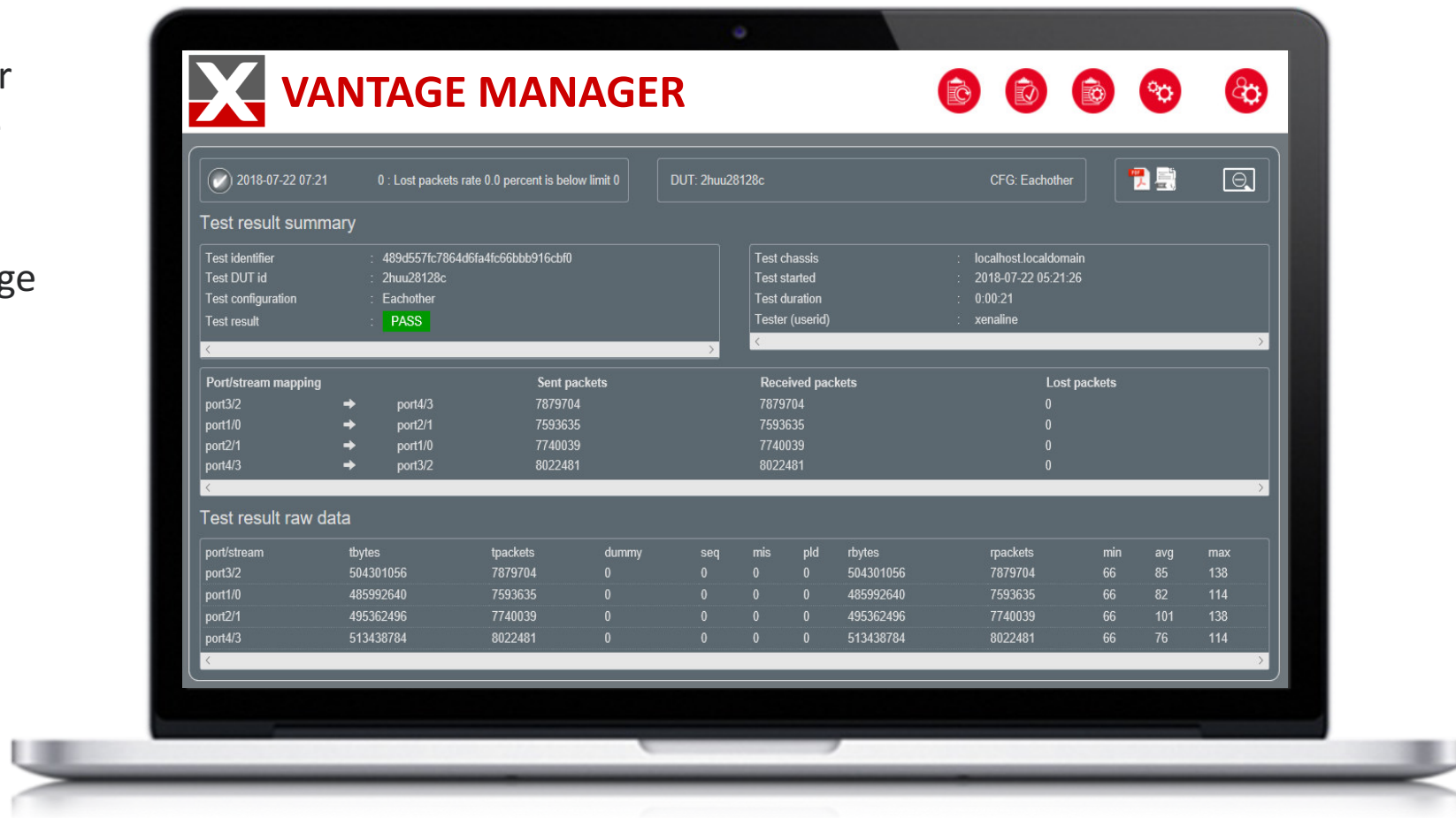
Ready to Use Test Cases

TWO-WAY INTERACTION TEST

Generate traffic between all ports, or between odd and even ports, or one direction traffic generation, with or without VLAN tagged frames. The result of the test is a pass/fail message and in the case of fail details about the failure for later analysis.

AGGREGATION TEST

Supports one-to-many and many-to-one traffic generation.



DOCUMENTATION

All the documentation about Vantage products:

| | | | |
|----------------|-----------------------------|------------------------------------|-------------------------|
| General | Factsheet | Webpage | |
| VantageManager | User Manual | Step by Step Guide | |
| ValkyrieCLI | Datasheet | Scripting Guide | Webpage |
| | Knowledge Base | Application Notes | White Papers |

WHITE PAPER: PRODUCTION LINE TESTING



Any organization that produces Ethernet networking components will perform a variety of performance, functionality, and quality of service tests. While many of these tests take place at the R&D stage, companies that manufacture Ethernet components on a large scale also need to assure products as they come off the manufacturing line.

[DOWNLOAD NOW](#)

XENA VALUE PACK



3 years' SW updates included

When you buy any of our Valkyrie, Chimera, Vulcan or Vantage solutions, all the software licenses are included – plus you can download all the updates released during the next 3 years.



3 years' HW warranty included

We cover the cost of fixing hardware problems for 3 years after purchase



Technical support also included

Xena offers free online/email support for the lifetime of the product.



Free product training

We strive to make user-friendly solutions and provide comprehensive technical documentation. But if you'd also like some one-on-one technical training, we're happy to oblige.



Test. Improve. Repeat.

A man with a beard and short hair, wearing black boxing gloves and a black shirt, is shown from the chest up. He has a determined, intense expression on his face, with his mouth open as if shouting or exerting effort. He is positioned in the center of the frame, with his arms slightly raised. The background is dark and smoky, creating a dramatic atmosphere.

Want more?

CHECK TECHNICAL
DOCUMENTATION

TRY THE
LIVE DEMO

BOOK A FREE
DISCOVERY CALL