

Velox™ 3.2.2 Highlights

Probe Station Control Software

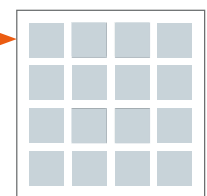
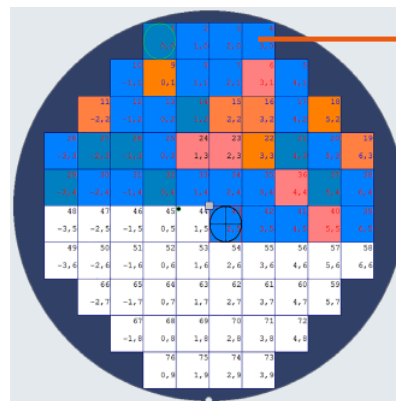
Velox 3.2.2 comes with a set of new features that enable faster time to accurate measurements. Additionally, free updates are now possible without the need of a Service visit.



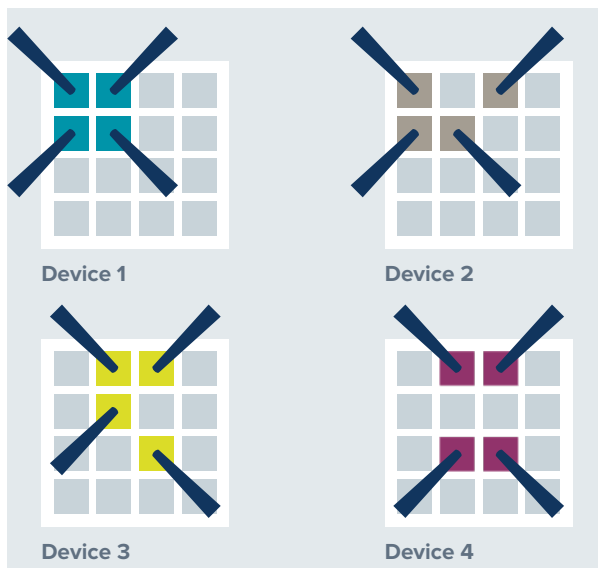
Motorized Positioner Manager

- For customers with very complex wafer structures
- Enables automatic test of multiple devices in each die location before stepping to the next die
- Changes probe layouts automatically for each die
- Simple and easy to create and modify layouts
- No programming necessary
- Easy integration with test executive software

Benefit:
Enhances test flexibility and increases throughput.



Die with 16 pads and multiple devices



Subdie	On	Bin	X	Y	Result	Label
0	<input type="checkbox"/>		0.0	0.0		[Die Origin]
1	<input type="checkbox"/>		0.0	0.0		Off 1
2	<input type="checkbox"/>		0.0	0.0		Off 2
3	<input type="checkbox"/>		0.0	149.4		Off 3

Subdie: Default

Configure Subdie

Add and update motorized positioner Subdie

Choose a subdie to update or select Add Subdie to record a new subdie.

Click Finish when complete.

Update Home

Add Subdie

Subdie Show Details

#	Name
0	[Die Origin]
1	Off 1
2	Off 2
3	Off 3
4	Off 4

Move to Off 4

Update Off 4

Delete Off 4

Cancel Finish

Velox Diagnostic Tool

- / Identification of incorrect station hardware setups
- / Documentation and log of station hardware setups
- / Simple fixing of incorrect setups with suggestions and “Fix It” tool

Benefit:

Health checks for your probe station.

The screenshot displays the 'Station Verifier - CM300 - SN: No serial number' application. The left sidebar lists test categories: All Tests, B&R Controller, Kernel, MHU300, MHU300 PC, PC, and Spectrum. The main area shows a tree view of tests. Under 'MHU300 PC', 'Folder Sharing' is highlighted in red and marked as 'Failed'. The right pane shows the 'Execution Details' for 'Folder Sharing', indicating a failure due to sharing issues. A 'Fix It' button is present. At the bottom, a summary shows 43 total tests, with 8 tested, 0 skipped, 7 passed, 1 failed, and 0 warned.



Simplified Update Process

- / Velox can now be updated by the user
- / No FormFactor service personnel needed
- / Automated backup during installation process

Benefit:

Keep your probe station up-to-date with the latest Velox features and enhancements.

* Requires Velox 3.1 or later and latest PC hardware. Please contact your local service person for more information.