

Cascade

# IZI Probe

RF and Microwave Wafer Probes

000111100010

## Overview

The IZI Probe family of RF and microwave wafer probes revolutionized the way you test your HF devices. Contacting your device under test (DUT) has never been easier and uses less overtravel than other wafer probes, which means less crashes and a longer probe life. In fact, the IZI Probe is guaranteed to last for over 1,000,000 contacts.

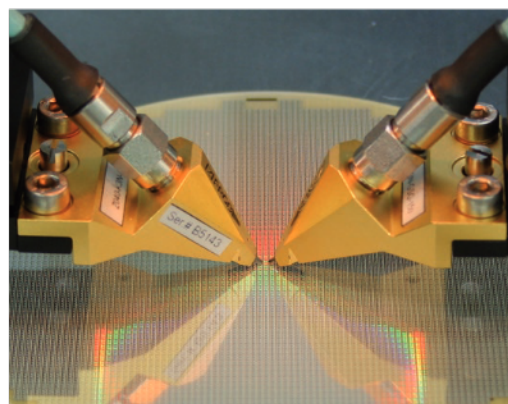
The IZI Probe family has been now further enhanced with the innovative 1MX™ technology. Electrical performance, especially insertion and return loss, has been advanced to levels superior to older technologies like thin-film and microcoax probes. In addition, isolation (crosstalk) has been significantly improved resulting in a probe that delivers the highest accuracy for your wafer-level RF and microwave measurements.

To calibrate your probes, we offer the powerful SussCal® Calibration Software and the highly-accurate CSR family of calibration substrates.



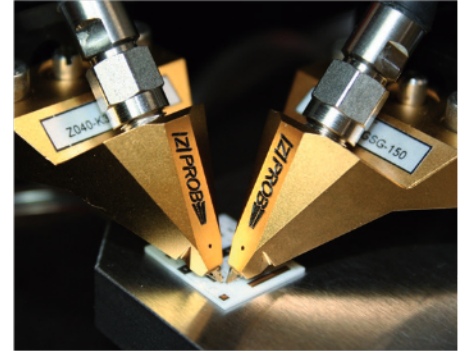
## IZI Probe GS / SG

Frequency	10 GHz	20 GHz
1MX technology	-	✓
Pitches (μm)	550 to 1250 μm*	50 to 500 μm*
Body		
• Slim case	K1N	K1N
• Slim case high temp / cryo	Y1N	Y1N
• Standard case	K3N	K3N
• Standard case high temp	Y3N	Y3N
• Oblique left / right	KRN/KLN	-



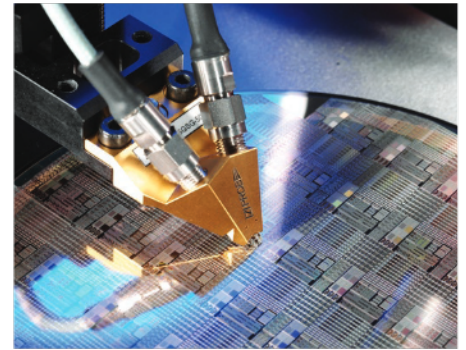
## > IZI Probe GSG

Frequency	40 GHz	50 GHz	67 GHz
1MX technology	✓**	✓	✓
Pitches (μm)	550 to 1250 μm*	50 to 500 μm*	50 to 250 μm*
<b>Body</b>			
• Slim case	K1N	A1N	V1N
• Slim case high temp / cryo	Y1N	B1N	C1N
• Standard case	K3N	A3N	V3N
• Standard case high temp	Y3N	B3N	C3N
• Oblique left / right	KRN/KLN	-	-



## > Dual IZI Probe

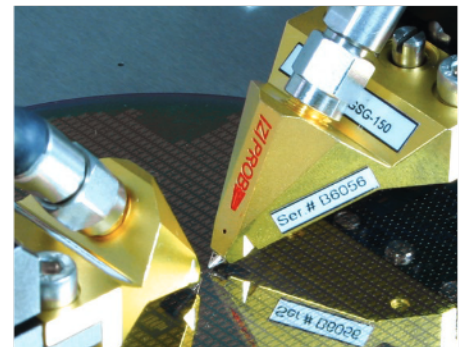
	GSGSG	GSSG / SGS
Frequency	40 GHz / 50 GHz	18 GHz
1MX technology	✓	✓
Pitches (μm)	100 to 500 μm*	100 to 500 μm*
<b>Body</b>		
• Standard case	K3N / A3N	K3N
• High temp / cryo	Y3N / B3N	Y3N



## > IZI Probe Power GSG

(For High Power / Low Loss Applications)

Frequency	40 GHz
Pitches (μm)	100 to 500 μm*
<b>Body</b>	
• Slim case with 2.92 mm connector	K1A
• Standard case with 2.92 mm connector	K3A
• Slim case with 2.4 mm connector	A1A
• Standard case with 2.92 mm connector	A3A



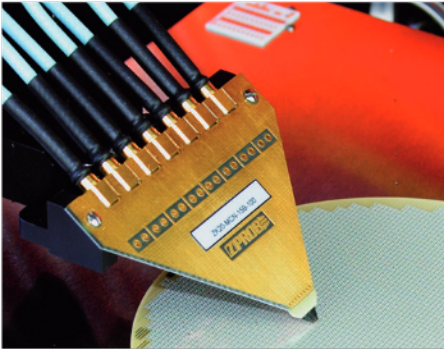
Data, design and specification depend on individual process conditions and can vary according to equipment configurations. Not all specifications may be valid simultaneously.

\*See datasheet for exact specifications. Custom pitches and footprints are available on request.

\*\* 1MX technology is available for pitches up to 500 μm.

➤ Multi-IZI Probe

	GSG	GS / SG, SS
<b>Frequency</b>	Up to 15 GHz	Up to 6 GHz
Digital applications	Up to 25 GHz	Up to 7.5 GHz
<b>Pitches (µm)</b>	100, 125, 150, 200, 250, 500 µm	100, 125, 150, 200, 250, 500 µm
<b>Number of contacts</b>		
• 100 to 200 µm	Up to 35 contacts	On request
• 250 µm	25 contacts	On request
• 500 µm	Up to 7 contacts	On request



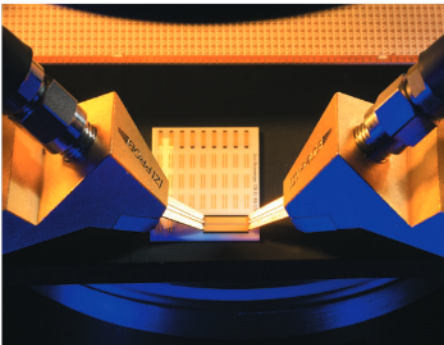
➤ IZI Probe Oblique

	GSG	GS / SG
<b>Frequency</b>	40 GHz	10 GHz
<b>Pitches (µm)</b>	100, 125, 150, 200, 250 µm	100, 125, 150, 200, 250 µm
<b>Body</b>		
• Left	KLN	KLN
• Right	KRN	KRN



➤ IZI Probe PCB

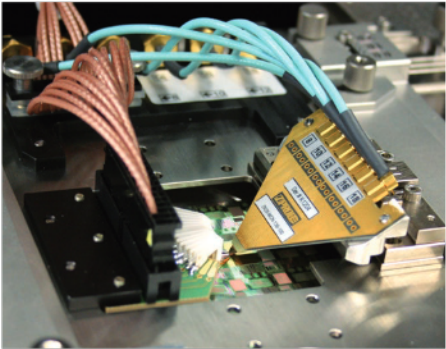
	GSG / GS / SG
<b>Frequency</b>	GSG / SG: 4 GHz GSG: Up to 20 GHz
<b>Pitches (µm)</b>	500, 650, 800, 1000, 1250, 1500, 2000, 2500 µm 350 to 4500 µm available upon request
<b>Body</b>	
• Slim case	P1S
• Standard case	P3S





➤ IZI Probe Card

Round	Minimum 4.5 inch in diameter
Rectangular	Minimum 4.5 inch
Probe layout	NESW
Available with	IZI Probe GS/SG IZI Probe Dual IZI Probe Multi IZI Probe IZI Probe Power



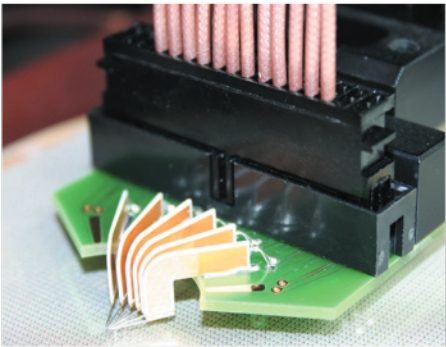
➤ HF Probe Wedge

Available with	IZI Probe GS/SG IZI Probe Dual IZI Probe Multi IZI Probe IZI Probe Power
----------------	---



➤ DC Probe Wedge

Kelvin	Up to eight microstrip blades
DC	Up to 20 blades (microstrip, ceramic or metal) Others on request



© Copyright 2021 FormFactor, Inc. All rights reserved.  
FormFactor and the FormFactor logo are trademarks  
of FormFactor, Inc. All other trademarks are the property  
of their respective owners.

All information is subject to change without notice.

IZI-PROBE-OVERVIEW-1021

Corporate Headquarters  
7005 Southfront Road  
Livermore, CA 94551  
Phone: 925-290-4000  
[www.formfactor.com](http://www.formfactor.com)